

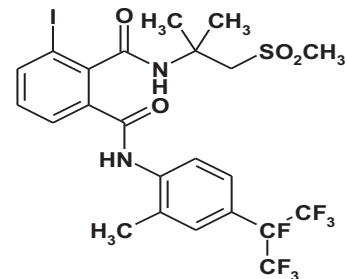


# BELT®

## unleash the power in Lepidoptera control

### Belt® chemistry:

- // **Common Name:** Flubendiamide
- // **Chemical family:** Phthalic acid diamides
- // **Chemical Name (CAS):** N<sup>2</sup>-[1,1-dimethyl-2-(methylsulfonyl)ethyl]-3-iodo-N<sup>1</sup>-[2-methyl-4-[1,2,2,2-tetrafluoro-1-(tri-fluoromethyl)ethyl]-phenyl]-1,2-benzenedicarboxamide
- // **Empirical formula:** C<sub>17</sub>H<sub>21</sub>N<sub>5</sub>O<sub>9</sub>S<sub>2</sub>



- // **Acute Oral Toxicity LD50**  
>2000 mg/kg body weight
- // **Acute Dermal Toxicity**  
>2000 mg/kg body weight
- // **Acute Toxicity Bees**  
Very low effect on bees
- // **Acute Toxicity Birds**  
Very low LD<sub>50</sub> >2000 mg/kg body weight
- // **Acute Toxicity Fish and Daphnia**  
Low EC<sub>50</sub> >0.06 mg/liter
- // **Acute Toxicity Earthworms**  
Very low LC<sub>50</sub> >1000 mg/kg
- // **Soil microorganisms**  
No influence up to 2250 g/ha
- // **Eye Irritation**  
slightly irritating
- // **Skin Irritation**  
non-irritant

- // *Very favourable environmental and toxicological profile.*
- // *A new product with a new mode of action for control of lep pests in a wide range of crops.*



### Application spectrum

*Pieris rapae* control in cabbage



Untreated



Belt® 50 g ai/ha

### Application spectrum

*Trichoplusia ni* control in cabbage



Untreated

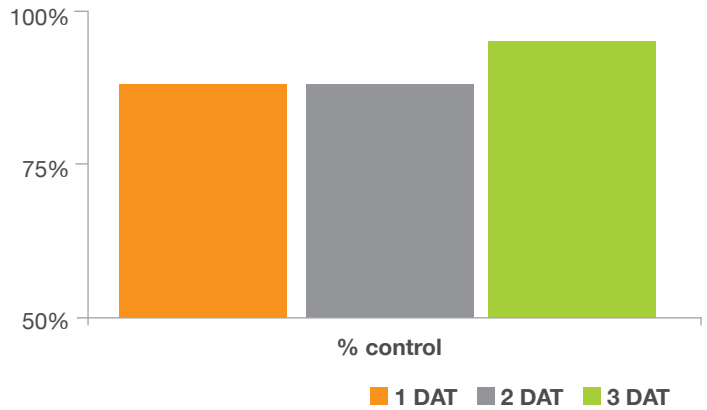


Belt® 50 g ai/ha

## Translaminar activity of flubendiamide

- // Plutella xylostella larvae affixed to underside of leaf
- // Treatments applied on leaf surface of cabbage plant
- // Mortality recorded at 1, 2 and 3 days after application

Standard laboratory tests show that **BELT®** exhibits the ability to control lepidopteran pests through translaminar activity



# BULLDOCK®

## Bulldock® 050 EC

- // Emulsifiable concentrate contact and stomach insecticide for the control of cutworm, stalkborer, *Chilo* and American bollworm
- // **Active ingredient:** Beta-cyfluthrin (pyrethroid): 50 g/l



**FOCUS PEST:**  
cutworm control  
with a long residual  
action

	Advantages
<b>Formulation: General</b>	<ul style="list-style-type: none"> <li>// Risk of resistance reduced because of high efficacy</li> <li>// Inactive trans isomer removed</li> <li>// F atom suppresses the enzyme that is responsible for resistance development</li> <li>// Highly active CIS isomer makes up 98% of the active</li> </ul>
<b>Formulation: Bulldock® GR</b>	<ul style="list-style-type: none"> <li>// Works well as a funnel application</li> <li>// Unique formulation</li> <li>// Cost effective</li> <li>// Ideal for wide rows</li> <li>// Provides a long residual action</li> <li>// Ideal for applying under dry conditions</li> <li>// Can be applied mechanically</li> <li>// Aimed at small farmers for follow up applications</li> </ul>
<b>Formulation: Bulldock® 050 EC</b>	<ul style="list-style-type: none"> <li>// Liquid is easier to measure accurately</li> <li>// Pours easily</li> <li>// Long residual action on dry ground</li> </ul>

	Advantages
<b>Spectrum</b>	<ul style="list-style-type: none"> <li>// Active in wet and dry soil which is ideal for cutworm control</li> <li>// Highly effective against stalkborer, <i>Chilo</i> and American bollworm</li> <li>// Registered on numerous crops</li> </ul>
<b>Technical Benefits</b>	<ul style="list-style-type: none"> <li>// Can be sprayed late in season</li> <li>// Not broken down by sunlight</li> <li>// Has a wide pH range (pH 4 - 9) and can, therefore, be mixed with most water types</li> <li>// Certain other pyrethroids need to be buffered</li> <li>// Lipophilic action ensures that the active sticks to the cuticle providing longer control</li> <li>// Leaching index improves cutworm control</li> </ul>
<b>Practical Aspects</b>	<ul style="list-style-type: none"> <li>// Offers long protection (up to 58 days reported from the field)</li> <li>// Ideal for soil application. Rain is essential for high efficacy</li> <li>// Can be mixed with a wide range of products including most herbicides</li> </ul>

Belt® Reg. No. L8860 (Act No. 36 of 1947). Belt® contains Flubendiamide (Caution). Bulldock® Reg. No. L7612 (Act No. 36 of 1947). Bulldock® contains Beta-cyfluthrin (Harmful). Belt® and Bulldock® are registered trademarks of Bayer AG, Germany. Use strictly according to instructions on label.

| @Bayer4Crops

Facebook: Bayer Crop Science Division Southern Africa Twitter: @bayer4cropssa  
 Bayer (Pty) Ltd. Reg. No. 1968/011192/07  
 27 Wrench Road, Isando, 1601. PO Box 143, Isando, 1600, Tel: +27 11 921 5002

Bayer Zambia: Paul Kapapula, Territory Manager.  
 Tel: +260 (965) 582630 E-mail: paul.kapapula@bayer.com

[www.cropscience.bayer.co.za](http://www.cropscience.bayer.co.za)

